

Analysis of Proposed Tax Levies for Library Purposes

December 10, 2007

Prepared by Driscoll & Fleeter
60 East Broad Street, Suite 350
Columbus, Ohio 43215

TABLE OF CONTENTS

Overview1

Important Variables1

 A. Levy Variables1

 B. Library Variables2

Results2

A. Levy Variables2

Table 1: Outcome of Proposed Property Tax Levies for General Levies and Bond Levies for Library Purposes-1980-20072

Chart 1: Outcome of Proposed General Levies for Library Purposes-1980 20073

Chart 2: Outcome of Proposed Bond Levies for Library Purposes-1980-20073

Table 2: Outcome of Proposed Property Tax Levies for Library Purposes by Type of Levy – 1980 – 20074

Chart 3: Outcome of Proposed Property Tax Levies for Library Purposes by Type of Levy – 1980 – 20074

Table 3: Outcome of Proposed Tax Levies for Library Purposes by Type of Election – 1980 - 20075

Table 4: Number of Levies Classified According to the Percentage of Voters Who Voted For the Proposal - 1980 – 20075

Chart 4: Number of Proposed Levies for Library Purposes Classified by the Percentage of Votes FOR the Proposal – 1980 – 20076

Table 5: Results of Levies Proposed for Library Purposes by Year – 1980 – 20077

Table 6: Summary of Library Levy Outcomes Classified According to the Type of Ballot for the Year in Which the Levy Proposal Appeared on the Ballot – 1980 – 20078

Chart 5: Number of Proposed Library Levies That Passed or Failed by Year – 1980 – 20078

Chart 6: Percentage of Proposed Library Levies That Passed by Year – 1980 – 20079

Table 7: Results of Levy Proposals for Library Purposes by Size of Tax Levy Proposed – 1980 – 200710

Table 8: Results of Levy Proposals for Library Purposes by Term of Years for Proposed Tax Levy – 1980 – 200711

B. Library Variables	11
Table 9: Results of Levy Proposals by Size of the County in Which the Library District Proposing the Levy Is Located – 1980 – 2007	12
Chart 7: Percentage of Tax Levy Proposals Approved by the Voters According to the Size of the County in Which the Proposal Appeared on the Ballot – 1980 – 2007	13
Table 10: Results of Levy Proposals by Size of the Library District Proposing the Levy – 1980 – 2007	13
Chart 8: Percentage of Tax Levy Proposals Approved by the Voters According to the Size of the Library District for Which the Proposal Appeared on the Ballot – 1980 – 2007	14
Table 11: Results of Levy Proposals by the Geographic Region of the Library District Proposing the Levy – 1980 – 2007	15
Chart 9: Percentage of Tax Levy Proposals Approved by the Voters According to the Geographic Region of the Library District Proposing the Levy – 1980 – 2007	15
Conclusion	16
APPENDIX A – Results of Proposed Library Levies By County – 1980 – 2007	17-18
APPENDIX B – Results of Proposed Library Levies By Library District – 1980 – 2007	19-22
Appendix C – Counties By Region of the State	23-24
Summary of 2007 Library Tax Levy Results	25
Table 2007A: Summary of Election Results for 2007 Library Property Tax Proposals	25
Table 2007B: Results of General Tax Issues in 2007 by Number of Proposed Mills	25
Table 2007C: Results of General Tax Issues in 2007 by Percentage of “Yes” Votes	26
Table 2007D: Results of General Tax Issues in 2007 by Economic Region of the State	26
Table 2007E: Results of General Tax Issues in 2007 by Library Size	27

Overview

This paper updates a 2006 report about property tax levies proposed by Ohio libraries. The analysis relates the result of library tax proposals to different variables connected to the levy itself or to the library. The original analysis used an historical record of library levies from 1980 through November 2006 compiled by the Ohio Library Council (OLC). This update adds information about the results of 33 library tax levy proposals submitted to the voters in 2007. To facilitate the analysis, the records collected by OLC were standardized and imported into a database. Queries of the database organized the data according to the relationship between levy success or failure at the polls and relevant variables about the levies and the libraries.

Important Variables

The analysis looked at Levy Variables and Library Variables. A list of the variables within each type appears here. The detailed classifications used for one of the variables are set forth in an appendix.

A. Levy Variables

- 1) Levy Purpose – indicates whether the library levy was a general purpose levy or a bond levy.
- 2) Levy Type – indicates the kind of tax proposed by the levy:
 - a) New – a property tax not previously levied in the library district where the proposed levy appeared on the ballot.
 - b) Renewal – the library sought voter approval for a continuation of a property tax already levied by the library for a specified term.
 - c) Additional – the library sought voter approval to increase a tax already imposed by the library district.
 - d) Replacement – this kind of tax levy has the effect of renewing an existing tax, except that the renewal also includes a “resetting” H.B. 920 tax reduction percentage so that the resulting tax “replaces” the tax formerly levied at the original effective rate charged by the replaced tax rather than at the effective rate to which tax reduction factor percentages had reduced the original tax. A replacement levy generally results in a net increase in real property taxes with no effect on personal property taxes.
 - e) Reduction – A library district proposes to reduce an existing tax.
 - f) Construction – Some levy proposals were described as “construction” levies. These probably should be viewed as “new” levies.
 - g) Renewal and Additional – A library district proposed a renewal of an existing tax and the augmentation of the renewed tax with some additional taxes.
 - h) Replacement and Additional – A library district proposed a replacement of an existing tax and the augmentation of the replaced tax with additional taxes.
 - i) Unknown – Information about nine proposed levies included no characterization of the levy’s type.

3) Election – indicates whether the proposed levy appeared on the ballot at the primary election, the general election in November, or at a special election in February or August. During the period covered by this analysis, Ohio held primary elections as early as March and as late as June.

4) Year – indicates the calendar year in which a levy appeared on the ballot.

B. Library Variables

1) County size – This variable indicates the population range in the county in which library districts with a proposed levy were primarily or entirely located.

2) Library size – This variable indicates the size of the library in terms of the number of its registered borrowers or cardholders.

3) Region – This variable locates the library districts in six geographical regions in the state.

Results

Result of tax proposals will be analyzed first in terms of variables related to the levy itself and then in terms of variables associated with the library for which the tax was proposed.

A. Levy Variables

Ohio libraries proposed 575 tax levies between 1980 and November 2007. Table 1 shows a simple breakdown of the outcome of these proposals.

Table 1: Outcome of Proposed Property Tax Levies for General Levies and Bond Levies for Library Purposes – 1980 – 2007

	Pass	Fail	Total	Percent Passed
General Levy	313	115	428	73%
Bond Levy	97	50	147	66%
Total	410	165	575	71%

Roughly, three of four general purpose levies passed, and two of three bond levies passed. Thus, the success rate for bond levy proposals was somewhat less than the success rate for general purpose levies, although both purposes achieved relatively high rates of success.

Chart 1: Outcome of Proposed General Levies for Library Purposes - 1980 - 2007

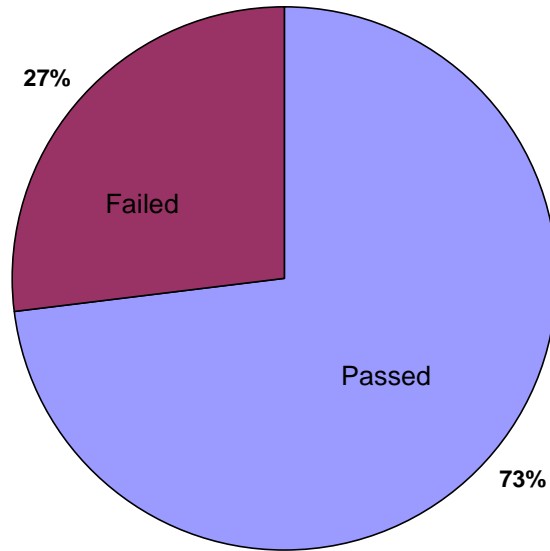
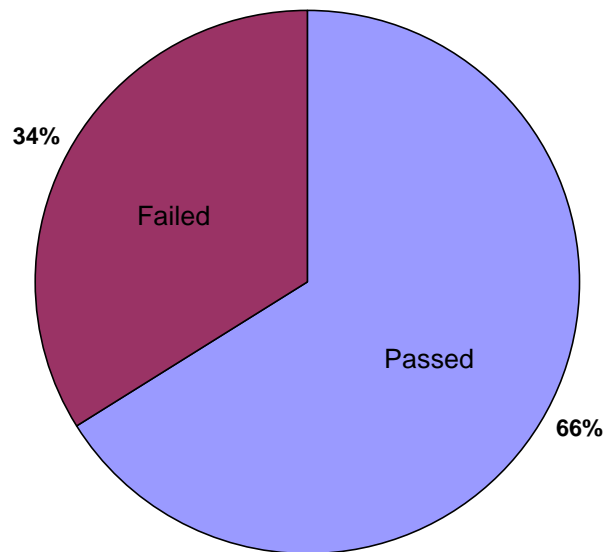


Chart 2: Outcome of Proposed Bond Levies for Library Purposes - 1980 – 2007



In 2007, 23 of 30 general library levies passed (77%). Only 1 of 3 bond levies passed (33%). The overall passage rate in 2007 slightly exceeded the long term rate of 71%.

Table 2: Outcome of Proposed Property Tax Levies for Library Purposes by Type of Levy – 1980 – 2007

Levy Type	Passed	Failed	Total	Percent Passed
NEW	180	122	302	60%
RENEWAL	109	7	116	94%
Replacement	64	9	73	88%
Additional	25	13	38	66%
Replacement and addit	16	5	21	76%
Renewal and Addit	7	7	14	50%
Unknown	8	1	9	89%
Construction		1	1	0%
REDUCE	1		1	100%
Total	410	165	575	71%

Chart 3: Outcome of Proposed Property Tax Levies for Library Purposes by Type of Levy – 1980 – 2007

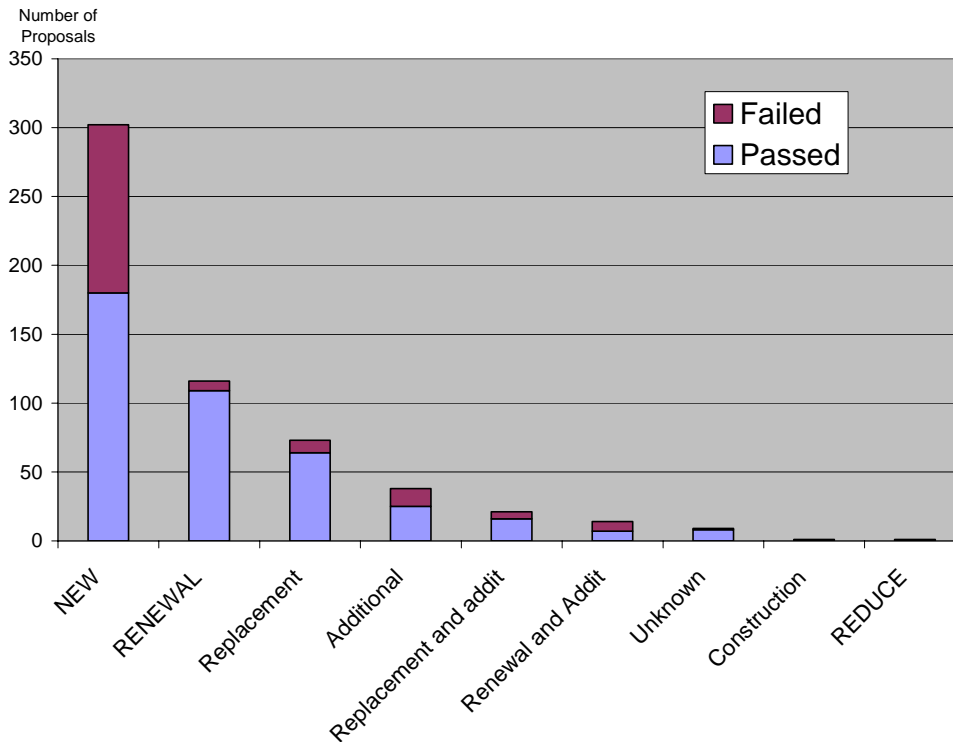


Chart 3 shows the results from Table 2 in graphic form. The lower segment of each bar shows the number of successful levy proposals.

Table 3 classifies the proposed levies according to the type of election at which the proposal appeared on the ballot.

Table 3: Outcome of Proposed Tax Levies for Library Purposes by Type of Election – 1980 -2007

	Pass	Fail	Total	Percent Passed
General	230	94	324	71%
Primary	170	70	240	71%
Special	10	1	11	91%
Total	410	165	575	71%

The table shows that the chances of success were virtually identical at the November general election and at the Primary election. Library levies only appeared relatively few times at Special election ballots, but the success rate at the special elections was even higher. Since the number of separate election proposals involving library levies was so small, February and August special elections were not separately shown.

Table 4 classifies the outcome of library tax proposals in terms of the percentage of voters who voted FOR the levy.

Table 4: Number of Levies Classified According to the Percentage of Voters Who Voted For the Proposal - 1980 – 2007

Percent For	Levy Passed	Levy Failed
25% to 29%		6
30% to 39%		24
40% to 44%		49
45% to 49%		76
50%	10	7
51% to 54%	77	
55% to 59%	105	
60% to 70%	126	
More than 70%	80	
Unknown	12	3
Total	410	165

For example, the first row on the table shows that six proposed levies failed to obtain a 30% favorable vote. In other words, only 25% to 29% of the voters voting at the election cast their ballot in favor of the proposed library tax levy. First, it is instructive to concentrate on the unsuccessful proposals. The number of unsuccessful levy proposals shown in the last column increases as the percentage of favorable votes increases up to

49%. This shows that more of the unsuccessful levy proposals tended to fail in close races. For example, if a “close race” is defined as any unsuccessful proposal where the percentage of favorable votes ranged between 45% and 50%, then about half of all unsuccessful levy proposals involved a “close race.”

Note that seven levies received a 50% favorable vote but failed. This result occurred because the vote totals have been rounded to the nearest whole percent. For example, if a levy received 1,981 votes out of 4,000 votes cast, the percentage FOR would round to 50%, but the levy would lose. Similarly, ten levies received 50% support and succeeded by a small margin of votes.

Of the successful levies, 87 passed in “close races” when that term is defined as a favorable vote between 50% and 55%. It was far more common for a levy to pass by a large percentage than it was for a levy to fail by a large percentage. For example, 311 levies received at least 55% approval from the voters. Of the elections where the percentage of votes FOR the proposal is known, 78% of the successful proposals were not “close.” Of the unsuccessful proposals, only 50% of the outcomes were not “close.”

Chart 4: Number of Proposed Levies for Library Purposes Classified by the Percentage of Votes FOR the Proposal – 1980 - 2007

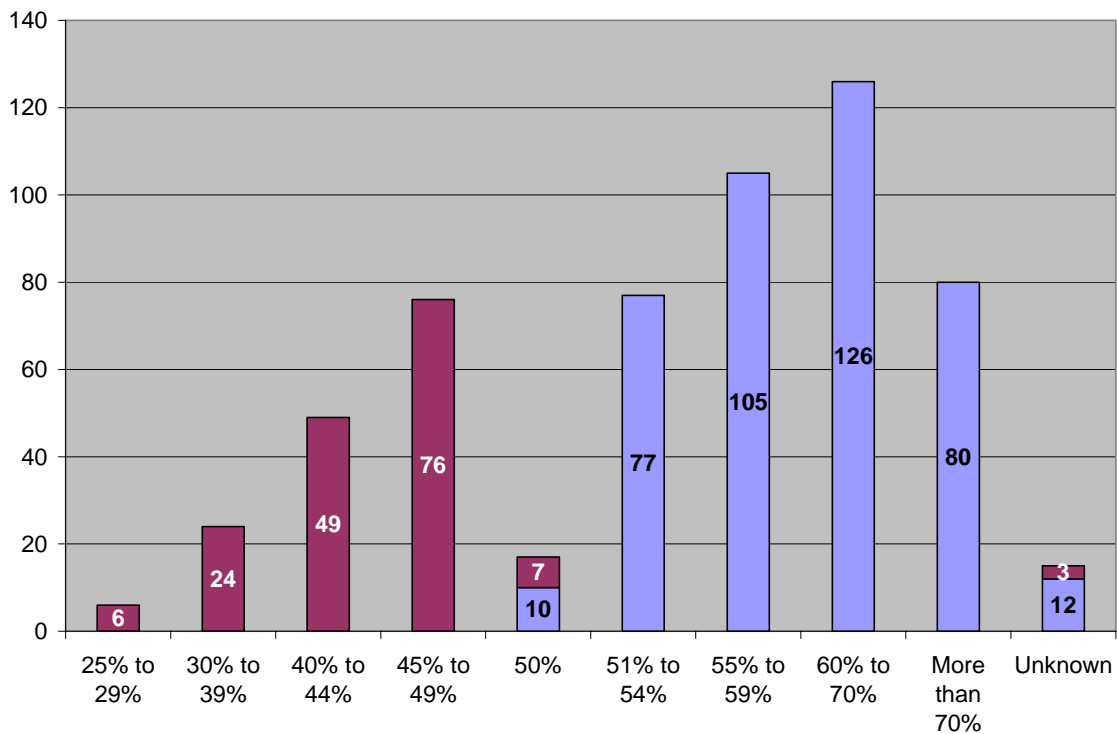


Chart 4 clearly shows that the number of “close races” defined in terms of the three columns between 45% and 54% is about equal. A very large difference appears in the number of proposals with higher margins of approval (more than 55%) compared to the number of proposals with low approval (less than 45%).

Table 5 shows the outcome of library levy proposals listed by year from 1980 through 2007. The last column, called “Type of Ballot,” identifies the years in which the race for President of the United States or for Governor of Ohio headed the ballot.

Table 5: Results of Levies Proposed for Library Purposes by Year – 1980 - 2007

Year	Pass	Fail	Total	Percent Passed	Type of Ballot
1980	7	3	10	70%	Presidential
1981	15	3	18	83%	Local
1982	7	6	13	54%	Gubernatorial
1983	8	5	13	62%	Local
1984	17	12	29	59%	Presidential
1985	10	9	19	53%	Local
1986	23	3	26	88%	Gubernatorial
1987	12	4	16	75%	Local
1988	14	6	20	70%	Presidential
1989	14	2	16	88%	Local
1990	13	2	15	87%	Gubernatorial
1991	18	5	23	78%	Local
1992	19	5	24	79%	Presidential
1993	15	13	28	54%	Local
1994	10	4	14	71%	Gubernatorial
1995	16	1	17	94%	Local
1996	16	7	23	70%	Presidential
1997	23	8	31	74%	Local
1998	13	6	19	68%	Gubernatorial
1999	9	4	13	69%	Local
2000	15	5	20	75%	Presidential
2001	18	6	24	75%	Local
2002	17	4	21	81%	Gubernatorial
2003	15	10	25	60%	Local
2004	15	8	23	65%	Presidential
2005	15	7	22	68%	Local
2006	12	8	20	60%	Gubernatorial
2007	24	9	33	73%	Local
Total	410	165	575	71%	

Table 6 combines the results in Table 5 to show the outcome by type of election ballot.

Table 6: Summary of Library Levy Outcomes Classified According to the Type of Ballot for the Year in Which the Levy Proposal Appeared on the Ballot – 1980 – 2007

Type of Ballot	Pass	Fail	Total	Percent Passed
Presidential	103	46	149	69%
Gubernatorial	95	33	128	74%
Local	212	86	298	71%
Total	410	165	575	71%

While library levies achieved a slightly lower success rate in Presidential election years, the difference between the rate in those years and the overall success rate was only 2 percentage points.

Chart 5 summarizes the data in Table 5. The colored portion of each column indicates the number of successful levy proposals for each year.

Chart 5: Number of Proposed Library Levies That Passed or Failed by Year – 1980 – 2007

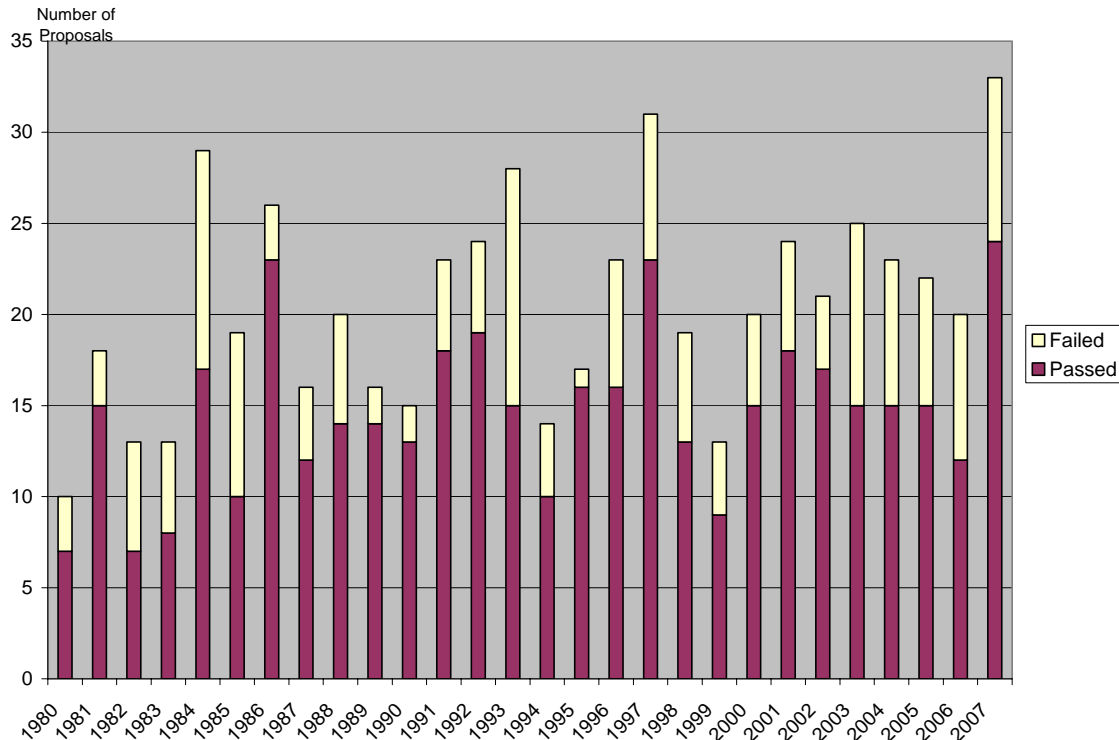


Chart 6 uses the data from Table 5 to track the success rate of proposed library levies over the period covered by this analysis.

Chart 6: Percentage of Proposed Library Levies That Passed by Year – 1980 – 2007

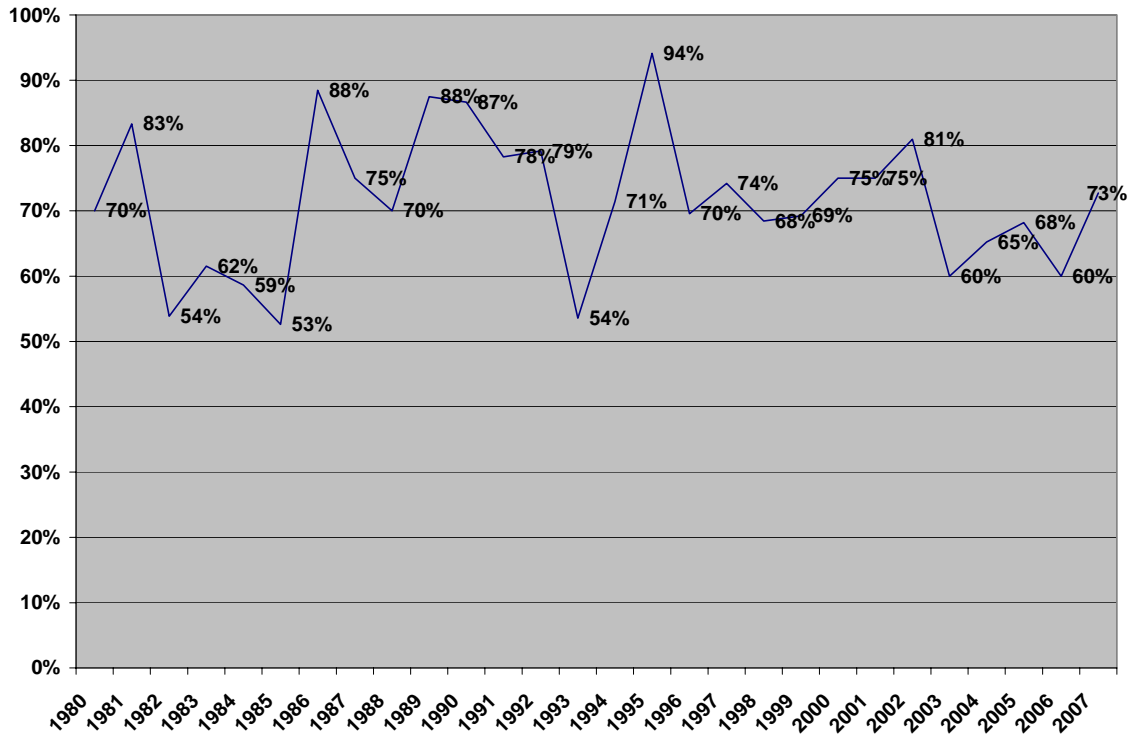


Chart 6 shows that library levies achieved the best success in 2007 since 2002.

Table 7 shows the results of library levy proposals classified according to the size of the tax levy involved. For example, of 41 tax levy proposals involving a tax of less than four-tenths of one mill, 33 passed and 8 failed for an approval rate of 80%. The most commonly proposed levy amount was one mill. About 115 levy proposals used that rate. The approval rate equaled 73%. The lowest approval rate of 50% occurred in the case of proposals between about one and one-half mills to two mills.

Table 7: Results of Levy Proposals for Library Purposes by Size of Tax Levy Proposed – 1980 – 2007

Number of Mills	Pass	Fail	Total	Percent Passed
Unknown	7	0	7	100%
.034 to .39	33	8	41	80%
.4 to .495	28	10	38	74%
0.5 to .59	43	18	61	70%
.6 to .69	28	6	34	82%
.7 to .79	22	8	30	73%
.8 to .89	31	3	34	91%
.9 to .99	14	5	19	74%
1 mill	84	31	115	73%
1.01 to 1.5	50	27	77	65%
1.537 to 1.99	19	19	38	50%
2 to 2.99	34	26	60	57%
3 to 3.99	12	3	15	80%
4 to 4.99	4	1	5	80%
5 or more	1	0	1	100%
	410	165	575	71%

Table 8 shows the outcome of proposed tax levies when the levies are classified according to the number of years over which the levy will apply. The information on Table 8 does not show any consistent pattern of success or failure relative to the term designated for a proposed levy.

Table 8: Results of Levy Proposals for Library Purposes by Term of Years for Proposed Tax Levy – 1980 – 2007

Term of Years	Pass	Fail	Total	Percent Passed
Unknown	10	3	13	77%
2	1	1	2	50%
3	2	1	3	67%
4	4	0	4	100%
5	254	72	326	78%
6	2	1	3	67%
7	1	1	2	50%
8	2	0	2	100%
10	25	15	40	63%
11	1	0	1	100%
12	1	0	1	100%
15	5	11	16	31%
16	1	0	1	100%
18	1	0	1	100%
20	45	25	70	64%
22	8	6	14	57%
23	6	2	8	75%
25	8	8	16	50%
27	4	0	4	100%
28	1	3	4	25%
30	2	2	4	50%
Annual	3	4	7	43%
Permanent	23	10	33	70%
Total	410	165	575	71%

B. Library Variables

This section of the report analyses the outcome of tax levy proposals for library purposes based on characteristics associated with the library rather than the details of the levy proposal.

Table 9: Results of Levy Proposals by Size of the County in Which the Library District Proposing the Levy Is Located – 1980 – 2007

County Size	Pass	Fail	Total	Percent Passed	Population	Number of Counties
Very Large	86	16	102	84%	800,000 and up	2 (3)
Large	123	46	169	73%	200,000 - 800,000	9 (9)
Medium	71	38	109	65%	100,000 – 200,000	14 (14)
Small	70	21	91	77%	50,000 - 100,000	17 (21)
Very Small	60	44	104	58%	Less than 50,000	28 (41)
Total	410	165	575	71%		70 (88)

Table 9 shows the outcome of levy proposal elections based on the size of the county in which the library district is located. For example, the table shows that 102 proposals appeared on the ballot in Very Large counties of which 86 passed and only 16 failed for a passage rate of 84%. The population of Very Large counties ranges from 800,000 up to about 1.4 million. Population data come from the 2000 Census. The final column of the table shows the number of counties in which a library levy proposal appeared on the ballot at some time over the 1980 – 2007 period. The second number in parentheses in that column shows the total number of counties in each population category regardless of whether a levy proposal appeared on the county’s ballot. For example, the first row shows that the 102 proposals in Very Large counties appeared on the ballot in two of them (Cuyahoga and Franklin) and the number “3” in parentheses shows that Ohio actually contains three Very Large counties. The third county in this classification, Hamilton, did not propose any library levies. Similarly, Ohio has 41 Very Small counties, but library levy proposals appeared on the ballots of only 28 of these counties.

Chart 7 focuses on the approval rate by size of county. It shows some tendency for library levies to have a higher likelihood of success in more populous counties, but the experience of Small counties represents an exception to that rule.

Chart 7: Percentage of Tax Levy Proposals Approved by the Voters According to the Size of the County in Which the Proposal Appeared on the Ballot – 1980 - 2007

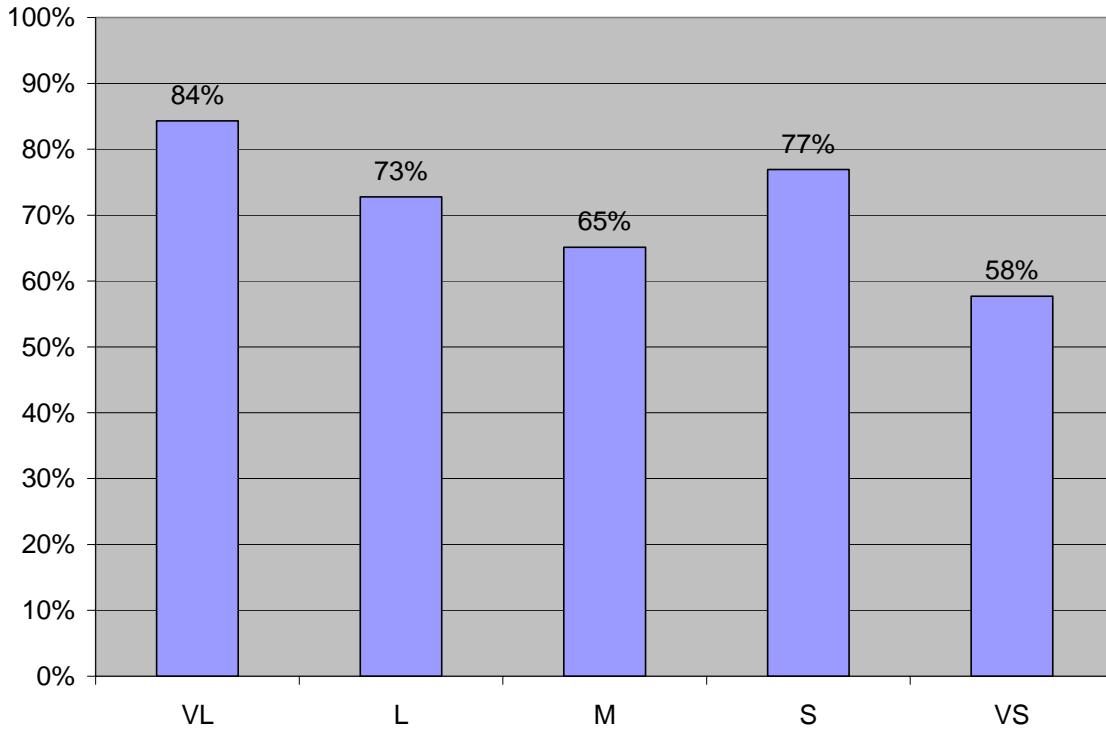


Table 10 shows the results of proposed library levies classified according to the size of the library. The size of a library depends upon the number of the library’s cardholders or registered borrowers.

Table 10: Results of Levy Proposals by Size of the Library District Proposing the Levy – 1980 – 2007

County Size	Pass	Fail	Total	Percent Passed	Cardholders/ Borrowers	Number of Library Districts
Very Large	25	5	30	83%	100,000 and up	3 (4)
Large	28	7	35	80%	50,000 - 100,000	7 (8)
Medium	78	26	104	75%	25,000 - 50,000	18 (20)
Small	181	90	271	67%	5,000 - 25,000	72 (106)
Very Small	98	37	135	73%	Less than 5,000	53 (112)
Total	410	165	575	71%		153 (250)

As in the case of Table 9, Table 10’s last two columns show the number of borrowers for each class size and the number of libraries in each class size. The parenthesized number in the last column shows the total number of libraries in each size classification regardless of whether the library proposed a tax levy. The un-parenthesized number shows the number library districts in each class size with at least one levy proposal during the 1980 – 2007 period.

For example, the state of Ohio has 20 Medium sized libraries with 25,000 to 50,000 cardholders. Of these 20 Medium libraries, 18 proposed at least one tax levy. The total number of levy proposals in Medium sized libraries equaled 104. Of that total 78 passed and 26 failed for a success rate of 75%. Therefore, Medium library districts succeeded with their levy proposals slightly more often than the 71% average success rate for all libraries would predict.

Chart 8 summarizes the success rate for library tax levy proposals by the size of the library submitting the proposal. Very Large (83%), Large (80%), Medium sized (75%) and Very Small sized (73%) libraries achieved a success rate for levy proposals better than the average success rate for all libraries (71%). Only Small libraries had a smaller than average success rate of 67%.

Chart 8: Percentage of Tax Levy Proposals Approved by the Voters According to the Size of the Library District for Which the Proposal Appeared on the Ballot – 1980 - 2007

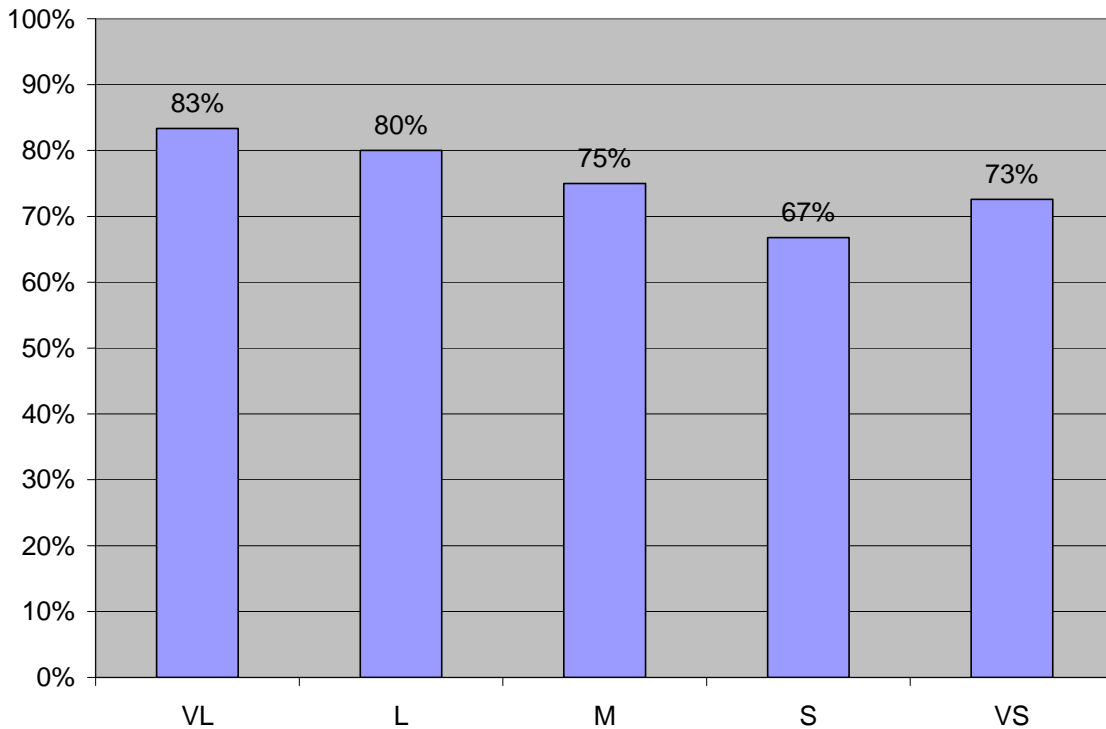


Table 11 shows the results of levy proposals based on the location of the library districts in geographical regions of the state. A table in the appendix lists the counties assigned to each district.

For example, the table shows that libraries in Northwest Ohio’s counties submitted 116 library tax proposals. Of these proposals, 93 succeeded and 23 failed. Thus, 80% of the proposals passed. The number of counties in the Northwest Ohio region is 22, although library tax proposals did not necessarily appear on the ballot in all of those counties. Northwest Ohio has 69 library districts, as shown by the number in parentheses in the last

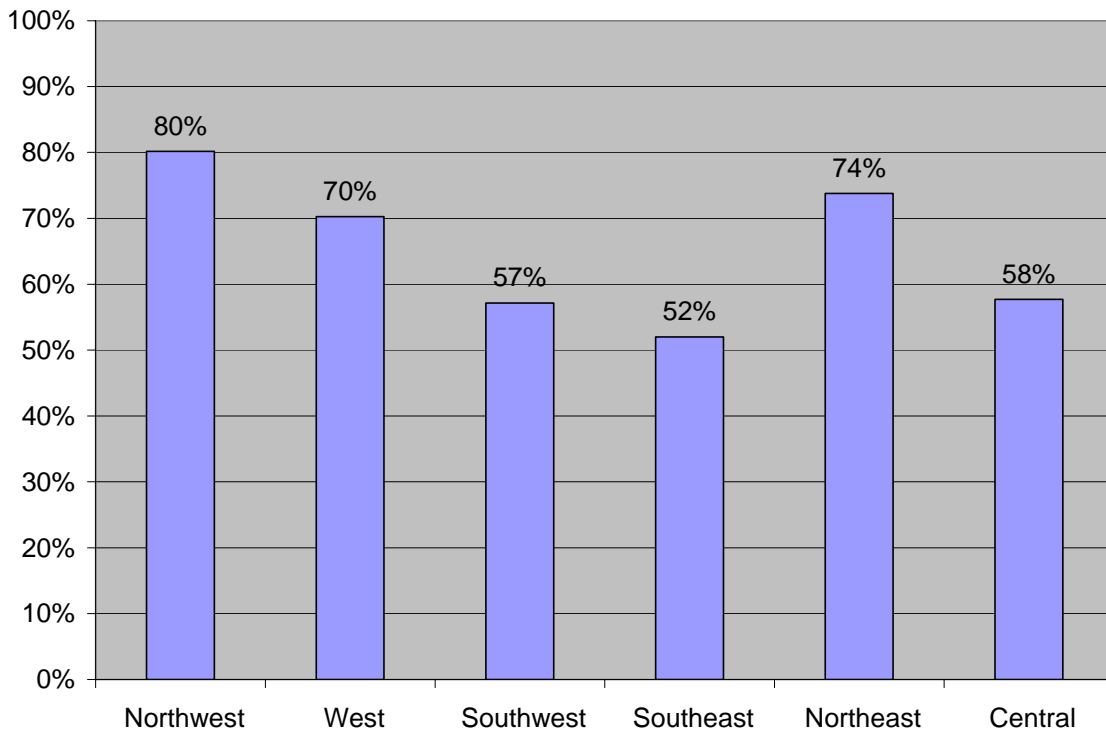
column. Of these districts in Northwest Ohio, 39 submitted levy proposals during the period covered by this analysis.

Table 11: Results of Levy Proposals by the Geographic Region of the Library District Proposing the Levy – 1980 – 2007

Region	Pass	Fail	Total	Percent Passed	Number Of Counties	Number of Districts
1 Northwest	93	23	116	80%	22	39 (69)
2 West	26	11	37	70%	9	12 (27)
3 Southwest	8	6	14	57%	7	7 (13)
4 Southeast	13	12	25	52%	18	9 (24)
5 Northeast	225	80	305	74%	17	61 (78)
6 Central	45	33	78	58%	15	25 (39)
Total	410	165	575	71%	88	153 (250)

The table shows that success rates in Southeast, Central, West and Southwest Ohio all fell below the statewide average of 71%. Chart 9 presents these success rates graphically.

Chart 9: Percentage of Tax Levy Proposals Approved by the Voters According to the Geographic Region of the Library District Proposing the Levy – 1980 – 2007



Northwest and Northeast Ohio library districts exceeded the State average passage rate (71%). The other four regions show passage rates less than the statewide average. However, the success rate in the West region came within one percentage point of the statewide average.

Conclusion

Overall, proposed library levies have a high success rate of 71%. General purpose levies have a slightly higher success rate than bond levies. Renewal and replacement levies have significantly higher success rates than new levies or renewal plus additional levies. Data show that a levy proposal has an equal chance of success at the primary or the general election. Library levies submitted at special elections have an even higher success rate.

Half of all unsuccessful levy proposals come within 5% of passing. This means that even in unsuccessful attempts to pass a library levy, the library district comes reasonably close to success. On the other hand, four out of five successful levy proposals obtain a favorable vote of 55% or better. Thus, when libraries do well in a tax levy election, they tend to do very well. If “close races” are defined as those elections where the proposed tax achieves a vote for the levy equal 45% to 54% of the votes cast, the libraries succeed in slightly more close races than those in which they fail.

Medium and Very Small *counties* have a relatively harder time obtaining voter approval for proposed tax levies. Very Small *library districts* do not have the same difficulty.

The geographic analysis of library levy proposals shows that libraries in the northern half of the state have better than average success. Southern and Central Ohio libraries fall short of the state average.

In 2007, the 73% passage rate slightly exceeded the overall rate between 1980 and 2007 (71%). From 2003 through 2006, the passage rate had fallen below the long term average. The results for 2007 showed improvement over those recent years. Otherwise, the results from 2007 elections did not change the relationships described in last year’s report on library tax levy proposals in any remarkable way.

APPENDIX A – Results of Proposed Library Levies By County – 1980 – 2007

County	Pass	Fail	Total	Percent Passed
Adams	0	1	1	0%
Allen	9	0	9	100%
Ashland	2	0	2	100%
Ashtabula	10	8	18	56%
Athens	2	0	2	100%
Auglaize	2	2	4	50%
Belmont	0	2	2	0%
Brown	1	3	4	25%
Butler	2	0	2	100%
Carroll	NA	NA	NA	NA
Champaign	7	3	10	70%
Clark	1	1	2	50%
Clermont	2	2	4	50%
Clinton	3	1	4	75%
Columbiana	3	5	8	38%
Coshocton	NA	NA	NA	NA
Crawford	1	0	1	100%
Cuyahoga	67	7	74	91%
Darke	0	1	1	0%
Defiance	1	1	2	50%
Delaware	2	0	2	100%
Erie	16	1	17	94%
Fairfield	2	1	3	67%
Fayette	NA	NA	NA	NA
Franklin	19	9	28	68%
Fulton	9	6	15	60%
Gallia	3	5	8	38%
Geauga	8	0	8	100%
Greene	5	3	8	63%
Guernsey	NA	NA	NA	NA
Hamilton	NA	NA	NA	NA
Hancock	0	1	1	0%
Hardin	4	1	5	80%
Harrison	NA	NA	NA	NA
Henry	1	2	3	33%
Highland	NA	NA	NA	NA
Hocking	NA	NA	NA	NA
Holmes	0	2	2	0%
Huron	20	3	23	87%
Jackson	NA	NA	NA	NA
Jefferson	NA	NA	NA	NA
Knox	4	4	8	50%
Lake	22	6	28	79%

County	Pass	Fail	Total	Percent Passed
Lawrence	NA	NA	NA	NA
Licking	4	4	8	50%
Logan	3	0	3	100%
Lorain	45	11	56	80%
Lucas	6	1	7	86%
Madison	5	3	8	63%
Mahoning	6	0	6	100%
Marion	NA	NA	NA	NA
Medina	10	4	14	71%
Meigs	0	1	1	0%
Mercer	NA	NA	NA	NA
Miami	1	0	1	100%
Monroe	1	1	2	50%
Montgomery	9	1	10	90%
Morgan	2	0	2	100%
Morrow	3	1	4	75%
Muskingum	1	0	1	100%
Noble	NA	NA	NA	NA
Ottawa	1	0	1	100%
Paulding	NA	NA	NA	NA
Perry	1	4	5	20%
Pickaway	0	3	3	0%
Pike	NA	NA	NA	NA
Portage	3	7	10	30%
Preble	NA	NA	NA	NA
Putnam	1	0	1	100%
Richland	5	1	6	83%
Ross	0	2	2	0%
Sandusky	2	0	2	100%
Scioto	NA	NA	NA	NA
Seneca	6	1	7	86%
Shelby	0	1	1	0%
Stark	4	10	14	29%
Summit	21	8	29	72%
Trumbull	8	9	17	47%
Tuscarawas	8	1	9	89%
Union	2	2	4	50%
Van Wert	1	0	1	100%
Vinton	4	1	5	80%
Warren	3	0	3	100%
Washington	0	2	2	0%
Wayne	8	2	10	80%
Williams	2	1	3	67%
Wood	6	0	6	100%
Wyandot	0	2	2	0%
Total	410	165	575	71%

APPENDIX B - Results of Proposed Library Levies By Library District – 1980 – 2007

FSC Code	Library District	Passed	Failed	Total	Percent Passed
OH0002	Akron-Summit County Public Library	6	1	7	86%
OH0004	Alger Public Library		1	1	0%
OH0006	Amherst Public Library	3		3	100%
OH0009	Archbold Public Library	3	1	4	75%
OH0010	Ashland Public Library	2		2	100%
OH0012	Ashtabula County District Library	2	8	10	20%
OH0013	Harbor-Topky Memorial Library	1		1	100%
OH0014	Seneca East Public Library		1	1	0%
OH0015	Avon Lake Public Library	7	1	8	88%
OH0016	Barberton Public Library	2	1	3	67%
OH0018	Clermont County Public Library	2	2	4	50%
OH0022	Bellevue Public Library	4		4	100%
OH0023	Bettsville Public Library	3		3	100%
OH0024	Bexley Public Library	1		1	100%
OH0025	Blanchester Public Library	3	1	4	75%
OH0027	Bluffton-Richland Public Library	5		5	100%
OH0032	Williams County Public Library	1	1	2	50%
OH0034	Burton	3		3	100%
OH0038	Canal Fulton Public Library		1	1	0%
OH0039	Stark County District Library	2	3	5	40%
OH0045	Washington-Centerville Public Library	3		3	100%
OH0046	Geauga County Public Library	5		5	100%
OH0048	Chillicothe and Ross County P L		2	2	0%
OH0050	Pickaway County District Pubic Library		3	3	0%
OH0051	Cleveland Public Library	7		7	100%
OH0052	Cuyahoga County Public Library	15	5	20	75%
OH0053	Cleveland Heights-University Hts P L	5		5	100%
OH0054	Clyde Public Library	1		1	100%
OH0056	Columbiana Public Library	2	2	4	50%
OH0057	Columbus Metropolitan Library	3		3	100%
OH0062	Taylor Memorial Public Library	1	2	3	33%
OH0063	Dayton & Montgomery Public Library	4		4	100%
OH0064	Defiance Public Library	1	1	2	50%
OH0065	Delaware County District Library	1		1	100%
OH0066	Delphos Public Library	4		4	100%
OH0067	Delta Public Library	5	5	10	50%
OH0072	East Cleveland Public Library	6		6	100%
OH0077	Elyria Public Library	2	4	6	33%
OH0078	Euclid Public Library	9	1	10	90%
OH0079	Fairport Harbor Public Library	1	1	2	50%
OH0081	Findlay-Hancock County Public Library		1	1	0%
OH0084	Kabisch Memorial Public Library	3		3	100%
OH0085	Franklin Public Library	1		1	100%
OH0086	Birchard Public Library Sandusky County	1		1	100%

FSC Code	Library District	Passed	Failed	Total	Percent Passed
OH0087	Galion Public Library Association	1		1	100%
OH0088	Dr Samuel L Bossard Memorial Library	3	5	8	38%
OH0089	Portage County District Library	1	7	8	13%
OH0090	Brown County Public Library	1	3	4	25%
OH0094	Grafton-Midview Public Library	1		1	100%
OH0095	Grandview Heights Public Library	5		5	100%
OH0096	Granville Public Library	1		1	100%
OH0099	Southwest Public Libraries		5	5	0%
OH0104	Hubbard Public Library	1	4	5	20%
OH0105	Hudson Library and Historical Society	6	1	7	86%
OH0106	Huron Public Library	4		4	100%
OH0109	Henderson Memorial	5		5	100%
OH0110	Kent Free Library	1		1	100%
OH0112	Kingsville Public Library	1		1	100%
OH0114	Kirtland Public Library	1		1	100%
OH0115	Lakewood Public Library	5		5	100%
OH0116	Fairfield County District Library	1	1	2	50%
OH0117	Lebanon Public Library	1		1	100%
OH0118	Leetonia Public Library		1	1	0%
OH0120	Liberty Center Public Library		1	1	0%
OH0124	London Public Library	4	2	6	67%
OH0125	Lorain Public Library System	22	6	28	79%
OH0127	Louisville Public Library		2	2	0%
OH0128	MacKenzie Memorial Public Library	2	1	3	67%
OH0129	Adams County Public Library		1	1	0%
OH0130	Mansfield-Richland County P L	4		4	100%
OH0131	Washington County Public Library		2	2	0%
OH0134	Marysville Public Library	2	2	4	50%
OH0136	Massillon Public Library	1	4	5	20%
OH0137	Herbert Wescoat Memorial Library	4	1	5	80%
OH0139	Kate Love Simpson Morgan County Lib.	2		2	100%
OH0140	Mechanicsburg Public Library		1	1	0%
OH0141	Medina County District Library	5	2	7	71%
OH0142	Mentor Public Library	3	2	5	60%
OH0144	Middletown Public Library	2		2	100%
OH0145	Milan-Berlin Township Libraries	4		4	100%
OH0146	Holmes County District Public Library		2	2	0%
OH0148	Monroeville Public Library	2		2	100%
OH0149	Montpelier Public Library	1		1	100%
OH0151	Mt Gilead Public Library	1	1	2	50%
OH0152	Mt. Sterling Public Library		1	1	0%
OH0153	P L of Mt Vernon and Knox County	4	4	8	50%
OH0154	Ridgemont Public Library	4		4	100%
OH0155	Napoleon Public Library	1	1	2	50%
OH0156	Nelsonville Public Library	2		2	100%
OH0158	Perry County District Library	1	4	5	20%

FSC Code	Library District	Passed	Failed	Total	Percent Passed
OH0159	New London Public Library		2	2	0%
OH0161	Tuscarawas County Public Library	3	1	4	75%
OH0163	Newark Public Library System	2	1	3	67%
OH0164	Newcomerstown Public Library	5		5	100%
OH0165	Newton Falls Public Library	2	3	5	40%
OH0168	North Canton Public Library	1		1	100%
OH0169	Norwalk Public Library	7	1	8	88%
OH0172	Wright Memorial Public Library	2	1	3	67%
OH0173	Oberlin Public Library	8		8	100%
OH0174	Orrville Public Library	4		4	100%
OH0175	Grand Valley Public Library	1		1	100%
OH0176	Putnam County District Library	1		1	100%
OH0177	Morley Library	5	1	6	83%
OH0178	Pataskala Public Library	1	3	4	25%
OH0180	Pemberville Public Library	1		1	100%
OH0182	Perry Public Library	3		3	100%
OH0183	Way Public Library	3		3	100%
OH0184	Pickerington Public Library	1		1	100%
OH0186	Plain City Public Library	1		1	100%
OH0187	Meigs County District Public Library		1	1	0%
OH0188	Ida Rupp Public Library	1		1	100%
OH0190	Reed Memorial Library	1		1	100%
OH0195	Rocky River Public Library	8		8	100%
OH0196	Rossford Public Library	2		2	100%
OH0198	Salem Public Library	1		1	100%
OH0199	Sandusky Library	4	1	5	80%
OH0200	Shaker Heights Public Library	6		6	100%
OH0201	Perry Cook Memorial Public Library	2		2	100%
OH0202	Marvin Memorial Library	1	1	2	50%
OH0203	Amos Memorial Public Library		1	1	0%
OH0204	Clark County Public Library	1	1	2	50%
OH0205	St Clairsville Public Library		2	2	0%
OH0206	Community Public Library	2	2	4	50%
OH0207	St Paris Public Library	1	2	3	33%
OH0209	Stow-Munroe Falls Public Library	2	3	5	40%
OH0210	Community Library	1		1	100%
OH0214	Tipp City Public Library	1		1	100%
OH0215	Toledo Lucas County Public Library	6	1	7	86%
OH0217	Twinsburg Public Library	4		4	100%
OH0218	Upper Arlington Public Library	5		5	100%
OH0219	Upper Sandusky Community Library		2	2	0%
OH0220	Champaign County Library	6		6	100%
OH0221	Brumback Library	1		1	100%
OH0222	Ritter Public Library	4		4	100%
OH0223	Worch Memorial Public Library		1	1	0%
OH0224	Ella M Everhard Public Library	5	2	7	71%

FSC Code	Library District	Passed	Failed	Total	Percent Passed
OH0226	Warren-Trumbull County Public Library	5	2	7	71%
OH0228	Wauseon Public Library	1		1	100%
OH0231	The Mary L Cook Public Library	1		1	100%
OH0232	Herrick Memorial Library	2		2	100%
OH0234	Wellsville Carnegie Public Library		2	2	0%
OH0237	Westerville Public Library	3	3	6	50%
OH0238	Porter Public Library	6	1	7	86%
OH0240	Wickliffe Public Library	3		3	100%
OH0241	Willard Memorial Library	7		7	100%
OH0242	Willoughby-Eastlake Public Library	4	1	5	80%
OH0244	Monroe County District Library	1	1	2	50%
OH0245	Wayne County Public Library	4	2	6	67%
OH0246	Worthington Public Library	2	1	3	67%
OH0247	Greene County Public Library	5	3	8	63%
OH0248	P L of Youngstown & Mahoning County	6		6	100%
OH0249	Dr Earl Sloan Library	3		3	100%
OH0250	Muskingum County P L System	1		1	100%
Total		410	165	575	71%

Appendix C – Counties By Region of the State

Northwest County	# of Library Districts	West County	# of Library Districts	Southwest County	# of Library Districts
Allen	3	Champaign	3	Adams	1
Auglaize	2	Clark	2	Brown	2
Crawford	3	Clinton	3	Butler	2
Defiance	1	Darke	4	Clermont	1
Erie	4	Greene	1	Hamilton	1
Fulton	6	Miami	6	Highland	1
Hancock	2	Montgomery	4	Warren	5
Hardin	6	Preble	3	Total	13
Henry	5	Shelby	1		
Huron	5	Total	27		
Lucas	1				
Mercer	4				
Ottawa	3				
Paulding	1				
Putnam	1				
Richland	2				
Sandusky	2				
Seneca	5				
Van Wert	1				
Williams	2				
Wood	7				
Wyandot	3				
Total	69				

Appendix C – Counties By Region of the State – continued

Southeast County	# of Library Districts	Northeast County	# of Library Districts	Central County	# of Library Districts
ATHENS	1	ASHLAND	2	DELAWARE	3
BELMONT	4	ASHTABULA	8	FAIRFIELD	2
CARROLL	1	COLUMBIANA	7	FAYETTE	1
GALLIA	1	COSHOCTON	1	FRANKLIN	7
GUERNSEY	1	CUYAHOGA	9	HOCKING	1
HARRISON	2	GEAUGA	2	KNOX	2
JACKSON	3	HOLMES	1	LICKING	5
JEFFERSON	1	LAKE	8	LOGAN	3
LAWRENCE	1	LORAIN	7	MADISON	4
MEIGS	1	MAHONING	1	MARION	1
MONROE	1	MEDINA	2	MORROW	4
MORGAN	1	PORTAGE	3	PERRY	2
MUSKINGUM	1	STARK	7	PICKAWAY	1
NOBLE	1	SUMMIT	7	ROSS	1
PIKE	1	TRUMBULL	7	UNION	2
SCIOTO	1	TUSCARAWAS	4	Total	39
VINTON	1	WAYNE	2		
WASHINGTON	1	Total	78		
Total	24				

Summary of 2007 Library Tax Levy Results

This addition to the library tax levy analysis summarizes the results of the 2007 tax levy proposals. Thirty-three library tax proposals appeared on the ballot in 2007. Nine of these issues appeared on the May primary ballot (five passed). One appeared on the August special election ballot and passed, and 23 appeared at the November general election (18 passed).

Table 2007A combines the results of the 2007 elections to show the overall success rate of library tax proposals by type of tax levy.

Table 2007A: Summary of Election Results for 2007 Library Property Tax Proposals

Levy Type	Passed	Failed	Total	Percent Passed
Additional	3	1	4	75%
New	4	4	8	50%
Renewal	6	0	6	100%
Replacement	10	2	12	83%
Subtotal (General Levies)	23	7	30	77%
Bond	1	2	3	33%
Total	24	9	33	73%

The table shows that 23 of 30 proposals for general levies for library purposes received favorable consideration. In addition, voters rejected two of three bond levies for construction purposes. Both of the unsuccessful bond levies were proposed by the same library district – Chillicothe and Ross County P.L. One of these levies for 0.43 mill appeared on the primary ballot and lost narrowly. Then a proposal for 0.49 mill appeared on the November ballot and lost by a somewhat wider margin.

Among the general library levies, London, Medina, and Pataskala libraries proposed levies in the primary election which failed narrowly. These three libraries proposed levies again at the November general election, and in each case the second attempt succeeded.

Table 2007B: Results of General Tax Issues in 2007 by Number of Proposed Mills

Mills	Passed	Failed	Total	Percent Passed
.4 to .5	6	2	8	75%
.55 to .94	6	1	7	86%
1.00	4	1	5	80%
1.2 to 1.5	2	2	4	50%
1.55 to 2.	3	0	3	100%
More than 2	2	1	3	67%
Total	23	7	30	77%

Table 2007B shows the results of the proposed general tax levies for library purposes in 2007 by the size of the proposed tax rate. This table does not include the three bond levy proposals. The highest rate approved equaled 3 mills (East Cleveland P.L.).

Table 2007C: Results of General Tax Issues in 2007 by Percentage of “Yes” Votes

Percent "Yes" Votes	Number of Proposals	Result
More than 70%	6	Passed
60% to 69%	7	Passed
55% to 59%	7	Passed
50% to 54%	3	Passed
45% to 49.9%	5	Failed
Less than 45%	2	Failed
Total	30	

Table 2007C shows the 30 general purpose library levy proposals in terms of the number of favorable or “yes” votes received. Twenty of the 23 successful proposals received more than 55% passage rates. In other words, by the definition used elsewhere in the library levy analysis, 20 of the 23 successful proposals were not “close” elections. A “close” election means an election where the votes in favor of the proposal range between 45% to 54.99%. Of the eight “close” elections, three proposed levies succeeded and five failed. Only two proposed levies failed in elections that were not “close.”

Table 2007D: Results of General Tax Issues in 2007 by Economic Region of the State

Region	Passed	Failed	Total	Percent Passed
Northwest	7	0	7	100%
West	2	2	4	50%
Southwest	0	1	1	0%
Southeast	1	0	1	100%
Northeast	6	1	7	86%
Central	7	3	10	70%
Total	23	7	30	77%

Table 2007D shows the geographical location of tax levy proposals for library purposes in 2007. In addition to the results on the table, the three bond levy proposals would add two unsuccessful levies in the Central region (Chillicothe) and one successful levy in the Northwest region (Ritter P.L. in Erie County).

Finally, Table 2007E shows the results of the 2007 elections by library size.

Table 2007E: Results of General Tax Issues in 2007 by Library Size

Library Size	Passed	Failed	Total	Percent Passed
Very Large	0	0	0	
Large	1	0	1	100%
Medium	4	1	5	80%
Small	9	2	11	82%
Very Small	9	4	13	69%
	23	7	30	77%

The addition of the three bond issues to this table would change only the results for “small” libraries by increasing the number of passed levies to 10 and the number of failed levies to 4. As a result, the success percentage among these libraries would change from 82% to 71%.

Overall, the results for 2007 do not differ significantly from the average over the period from 1980 through 2007. The success rate ticked upward in 2007 from the four most recent years. Otherwise, results of library tax proposals show consistency in 2007 compared to earlier years.